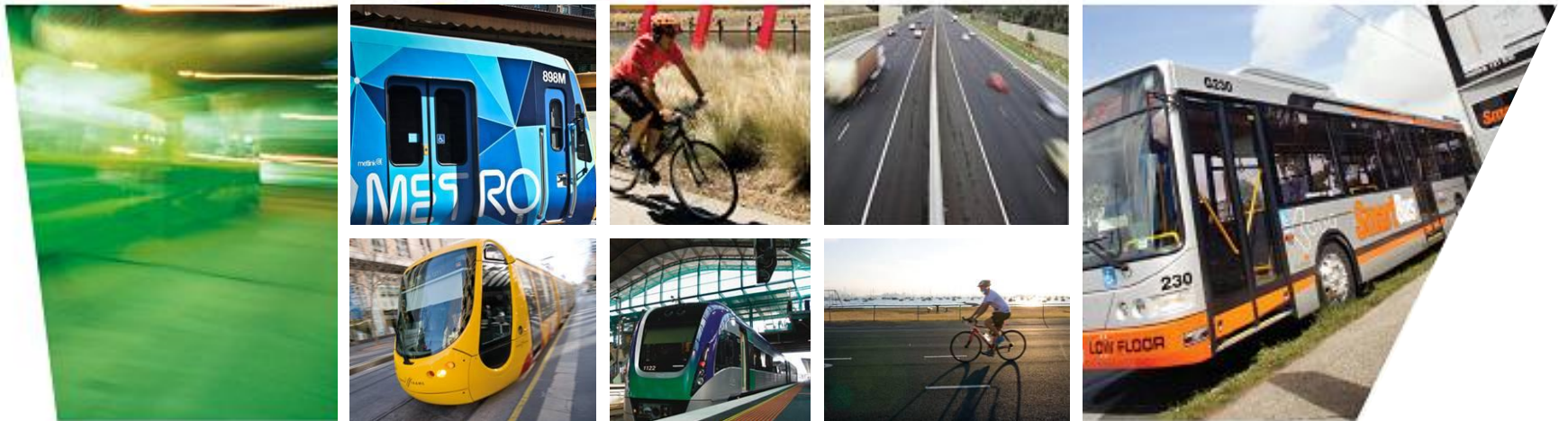


Developing a policy framework for sustainable transport

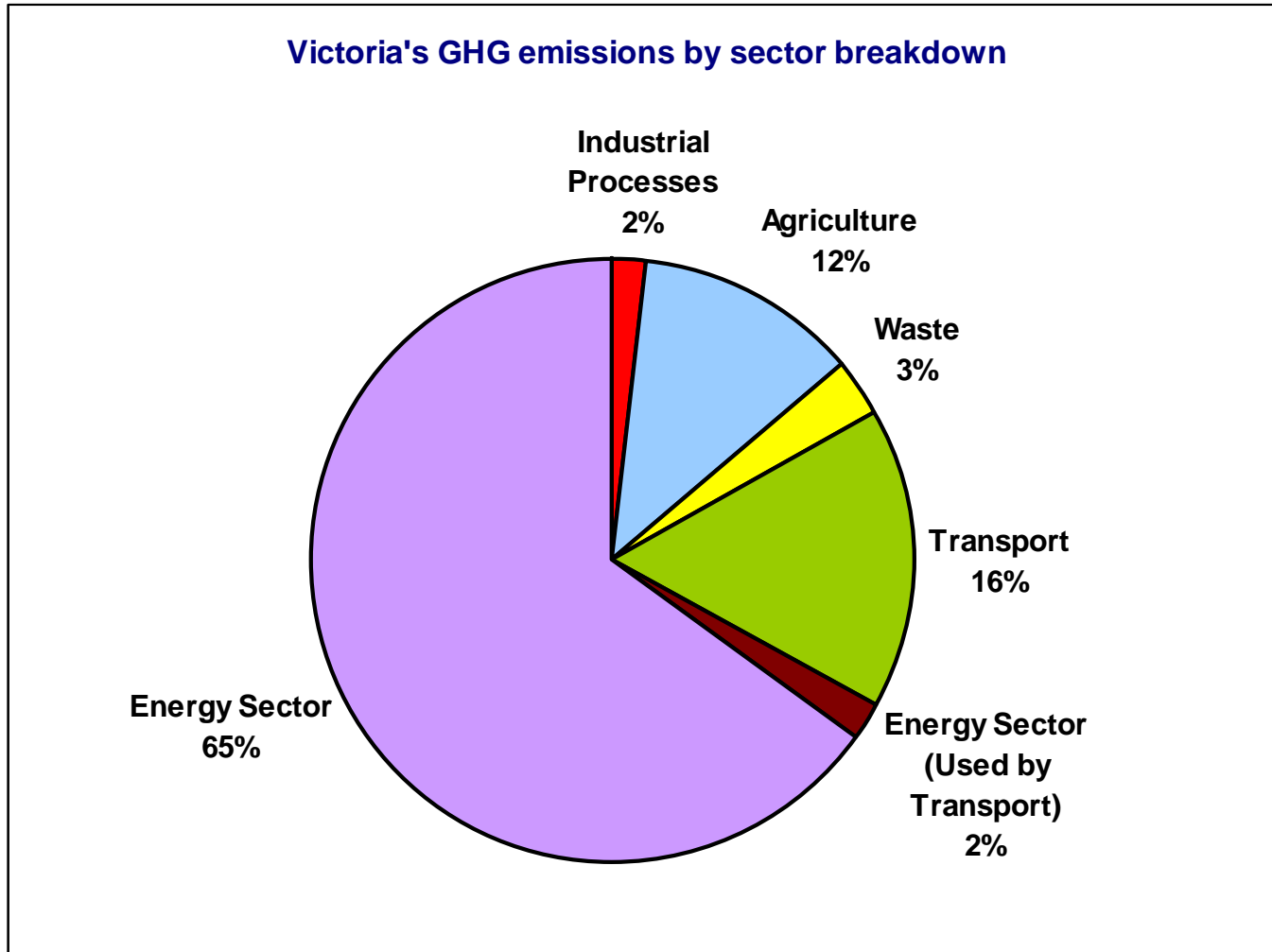
Michael Hopkins

Executive Director, Policy and Communications

11 November 2010

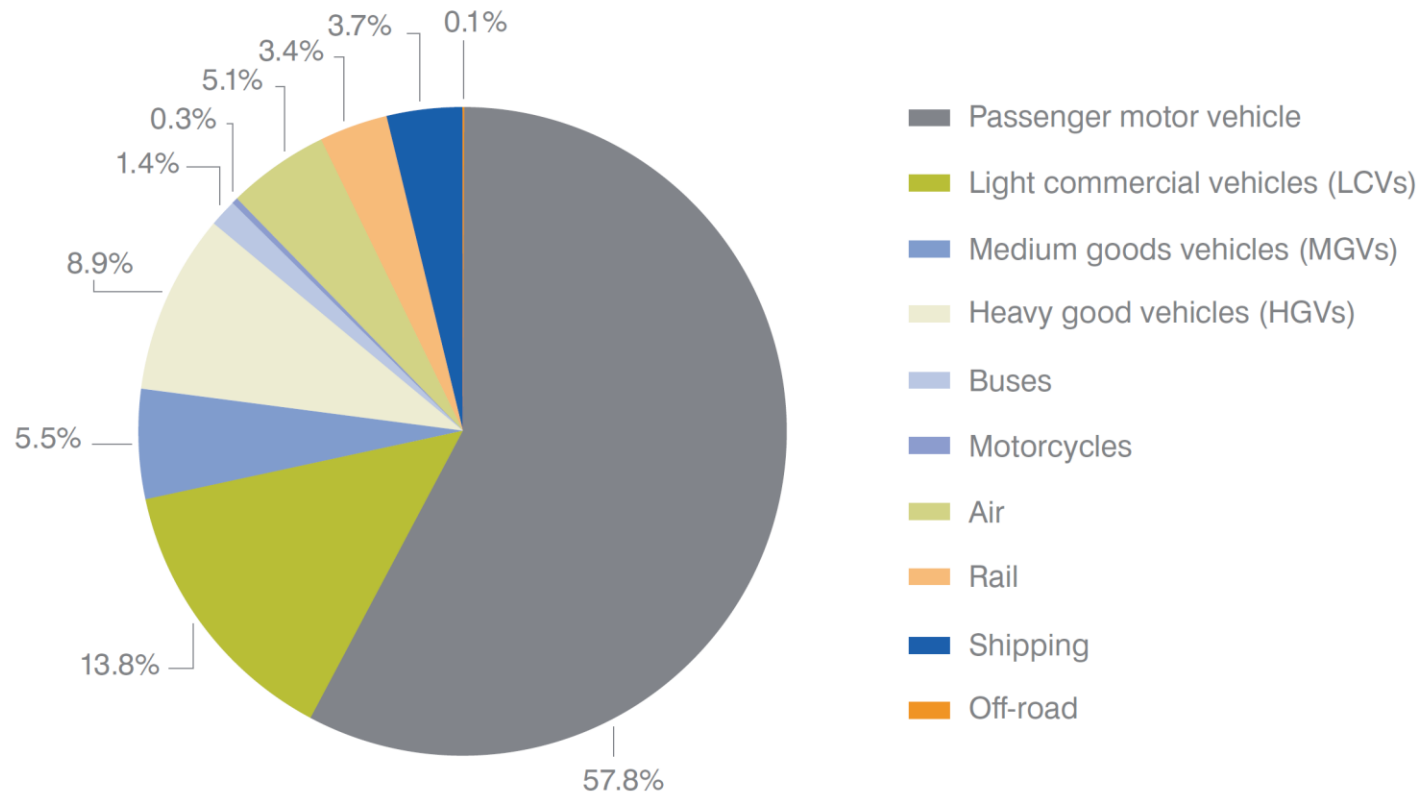


Transport – What's the problem ?



Transport – What sort of problem ?

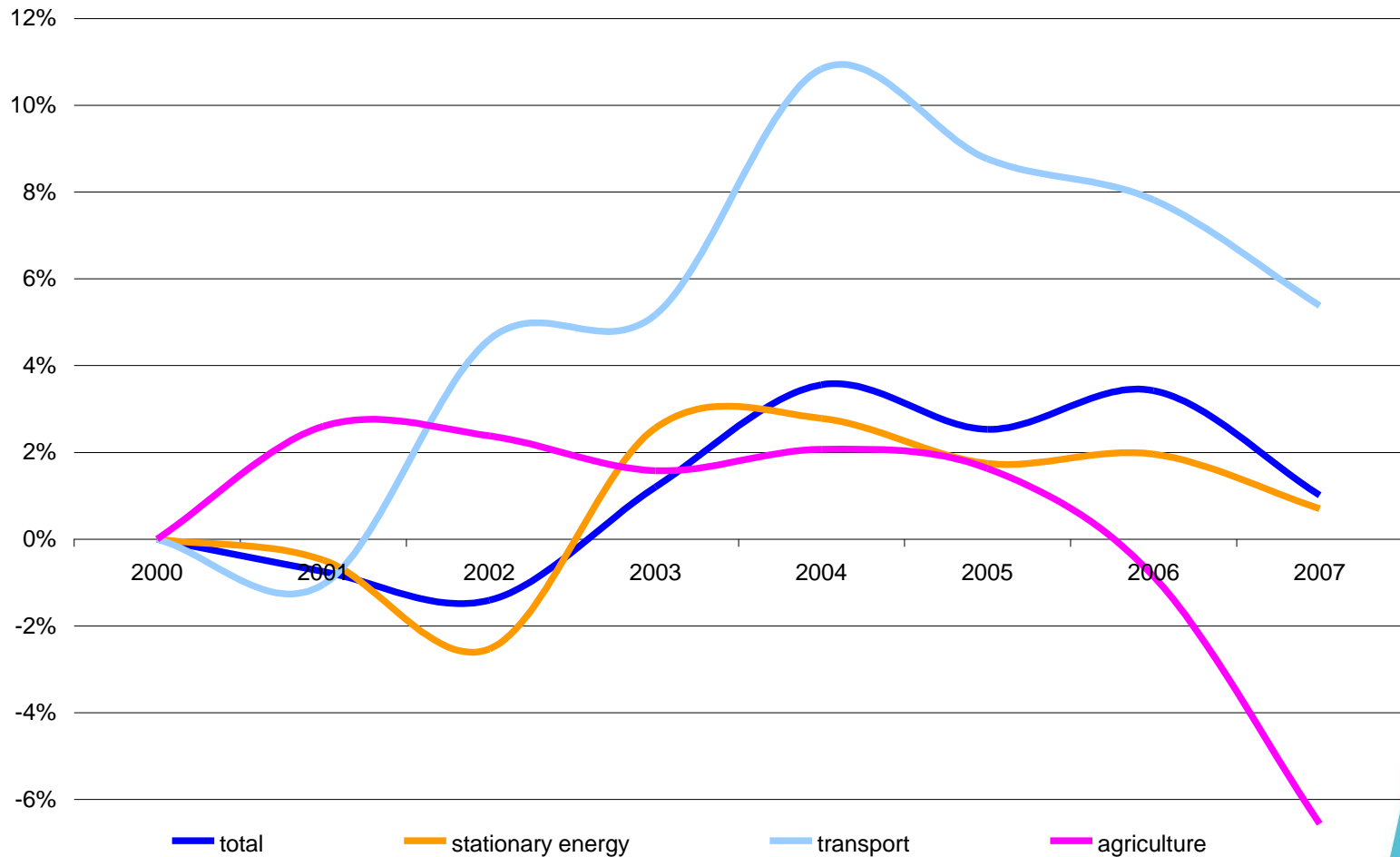
Victoria's greenhouse gas emissions by mode of transport



Source: Victoria's Greenhouse Gas Emissions 1990, 1995, 2000 and 2005:
End-use Allocation of Emissions, George Wilkenfeld and associates Pty Ltd, 2008

Emissions growth is slowing, but still growing

Base 2000

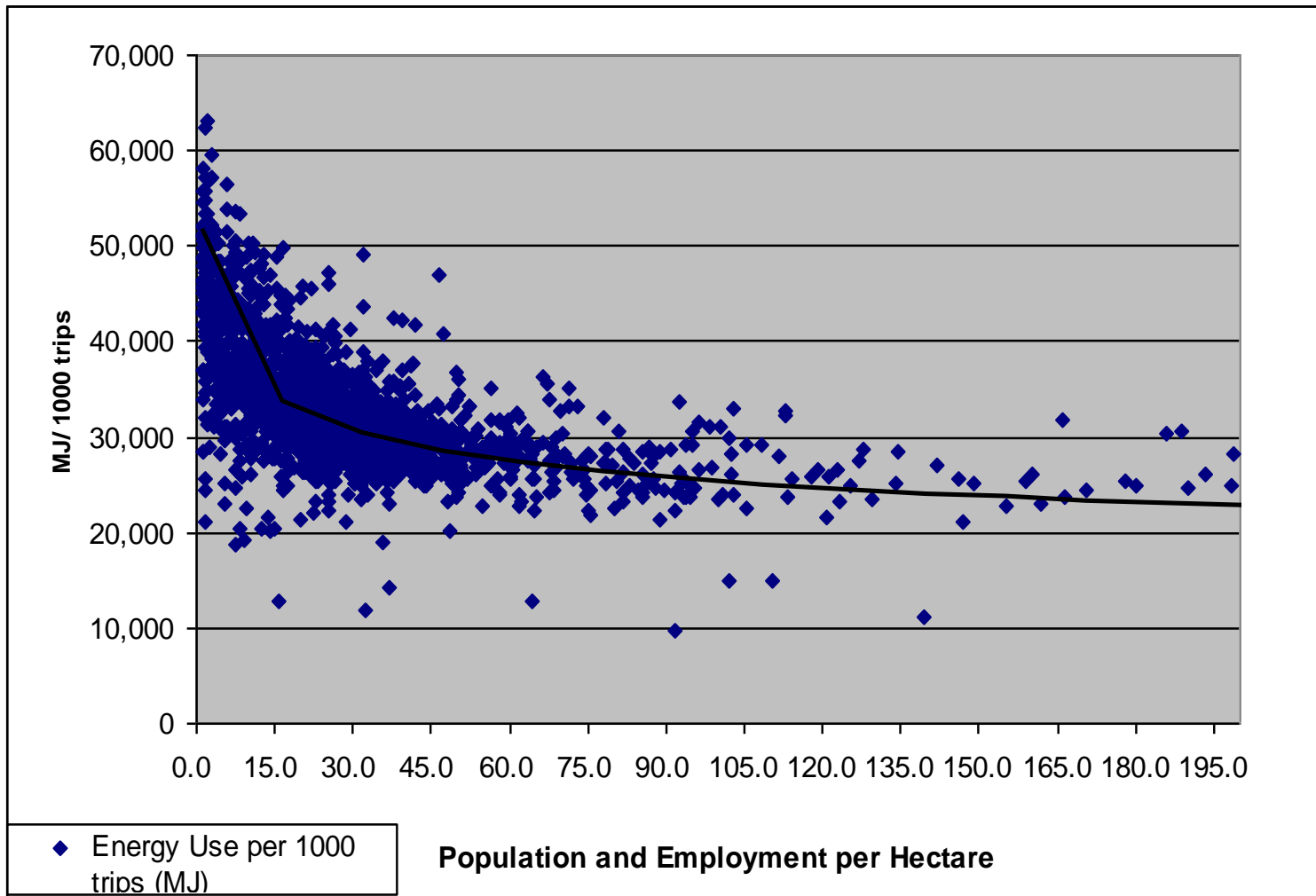


Sustainability and Transport

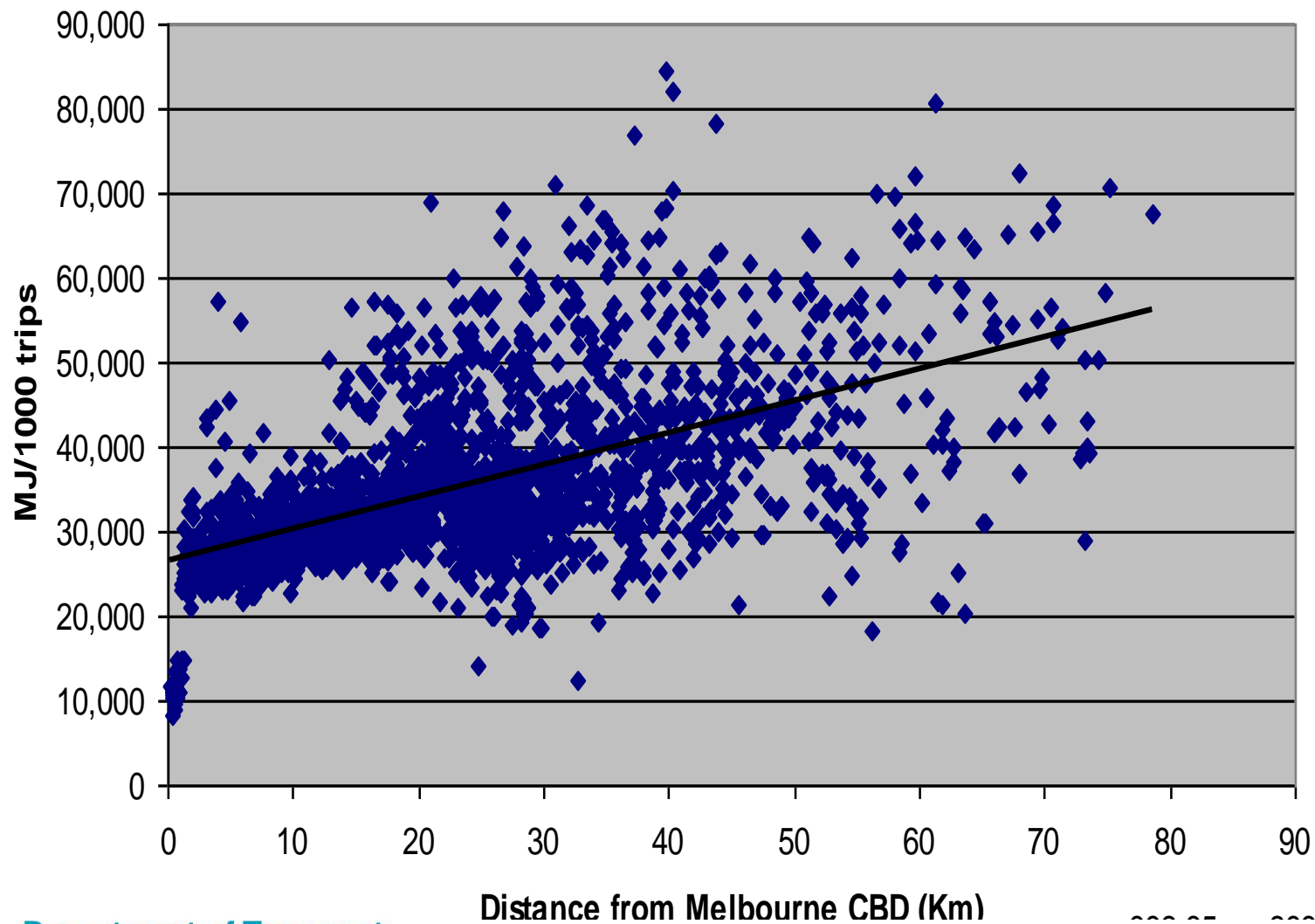
The transport sustainability framework:

- Reducing the need to travel without impacting people's access to opportunities and industry's need to move goods
- Modal shift to more sustainable forms of transport
- Ensuring that all forms of transport are as environmentally friendly as possible
- Make transport resilient to climate change

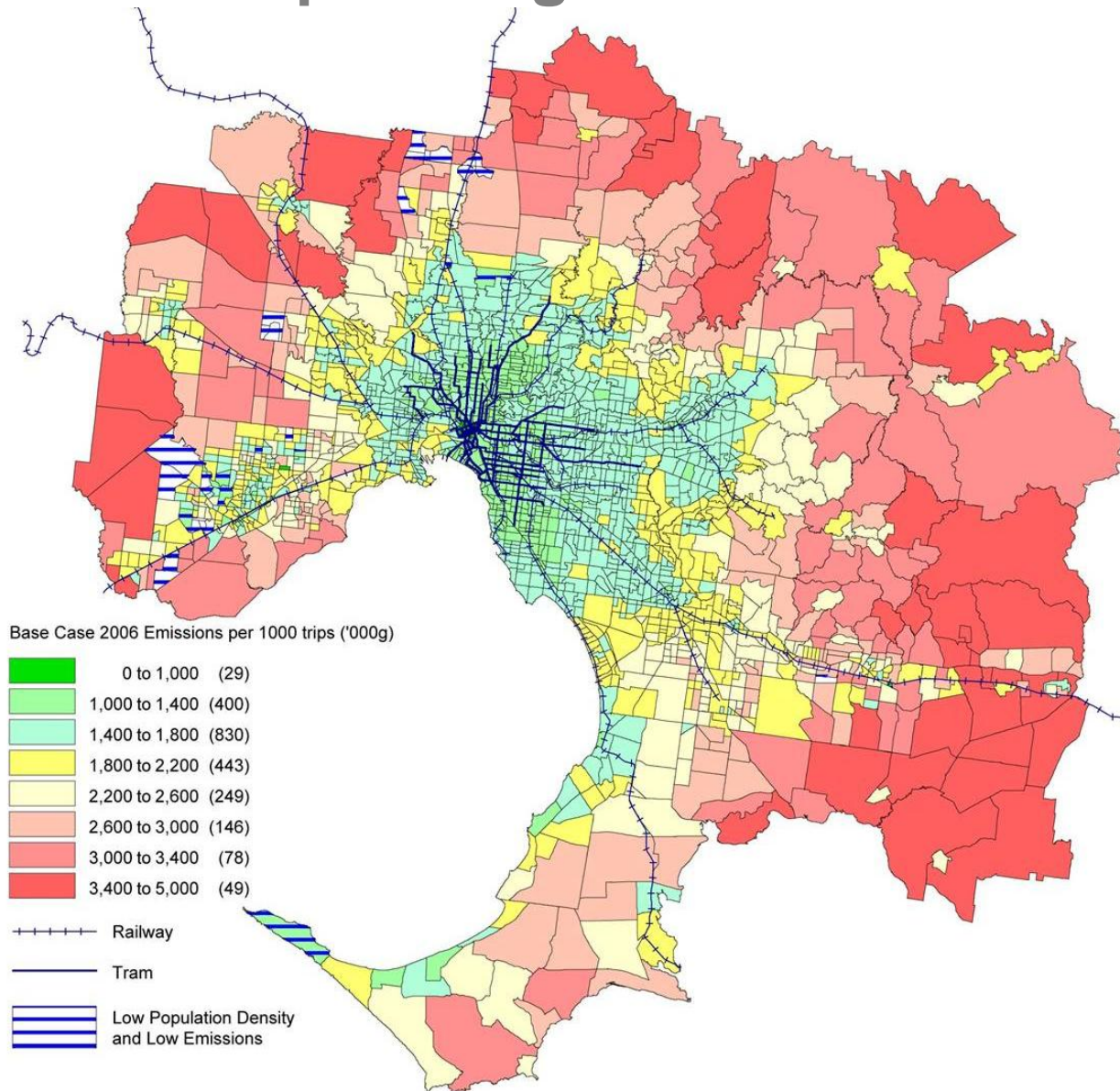
Land use planning matters



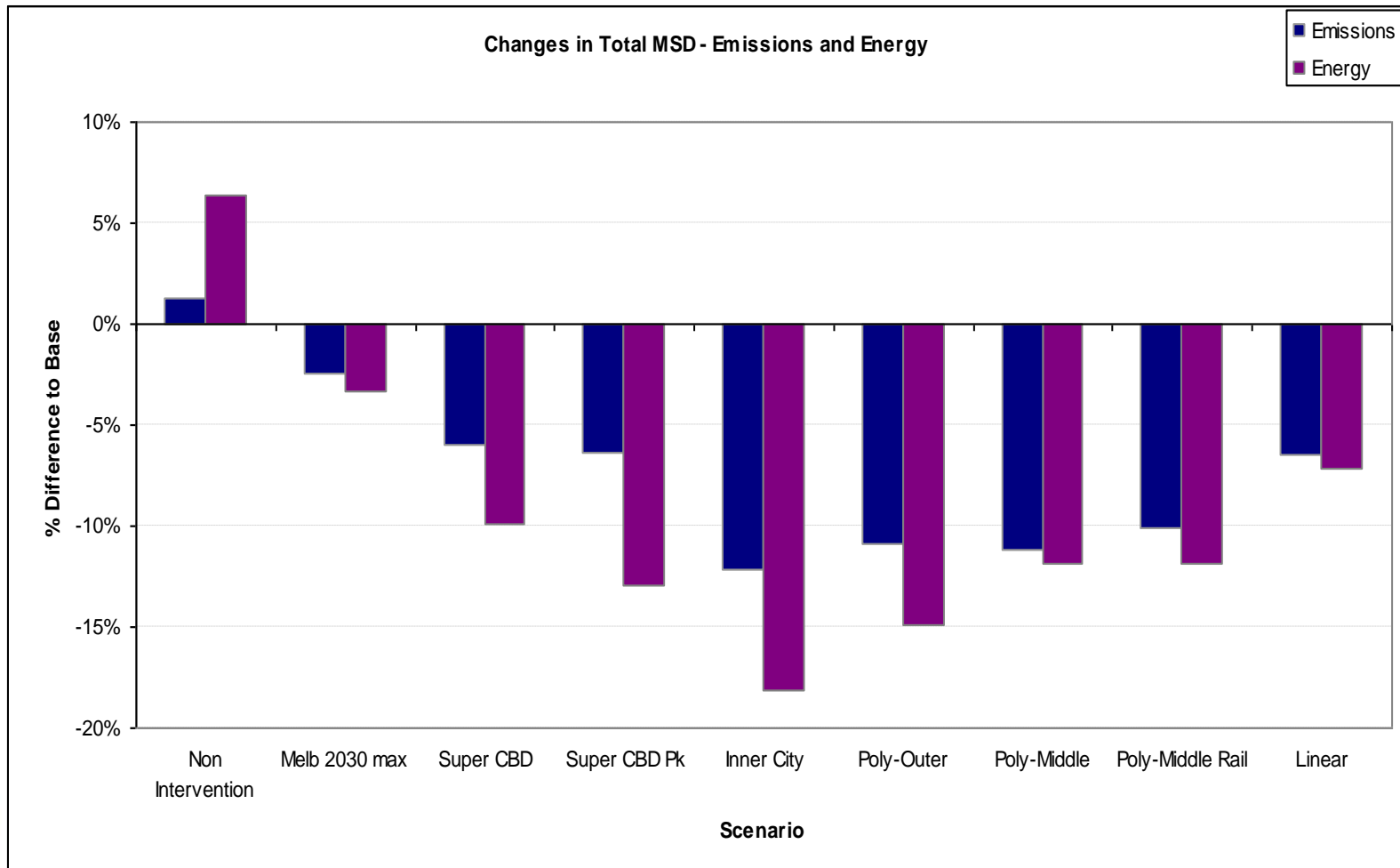
Land use planning matters



Land use planning matters



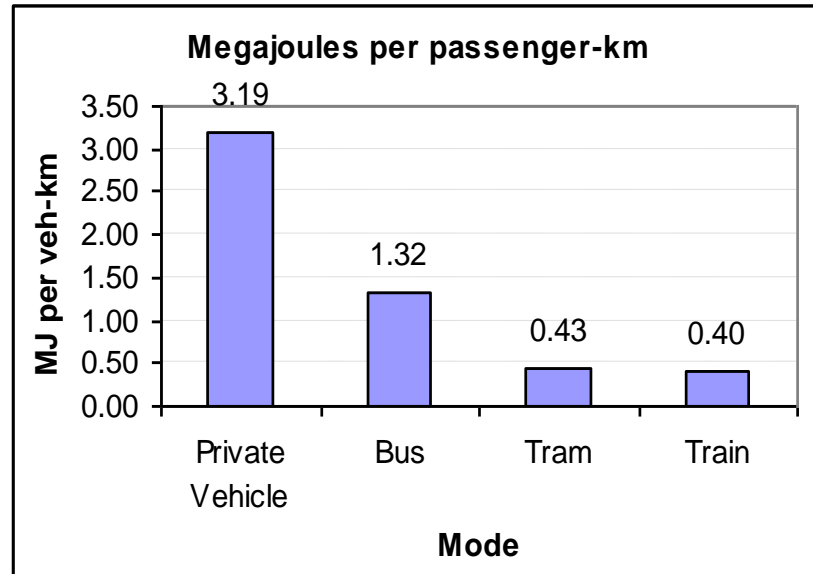
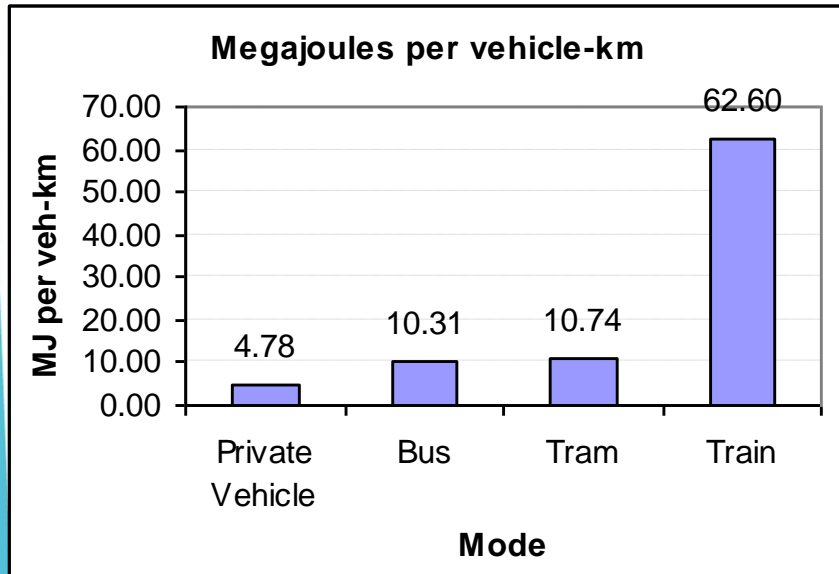
And it matters most in the long term...



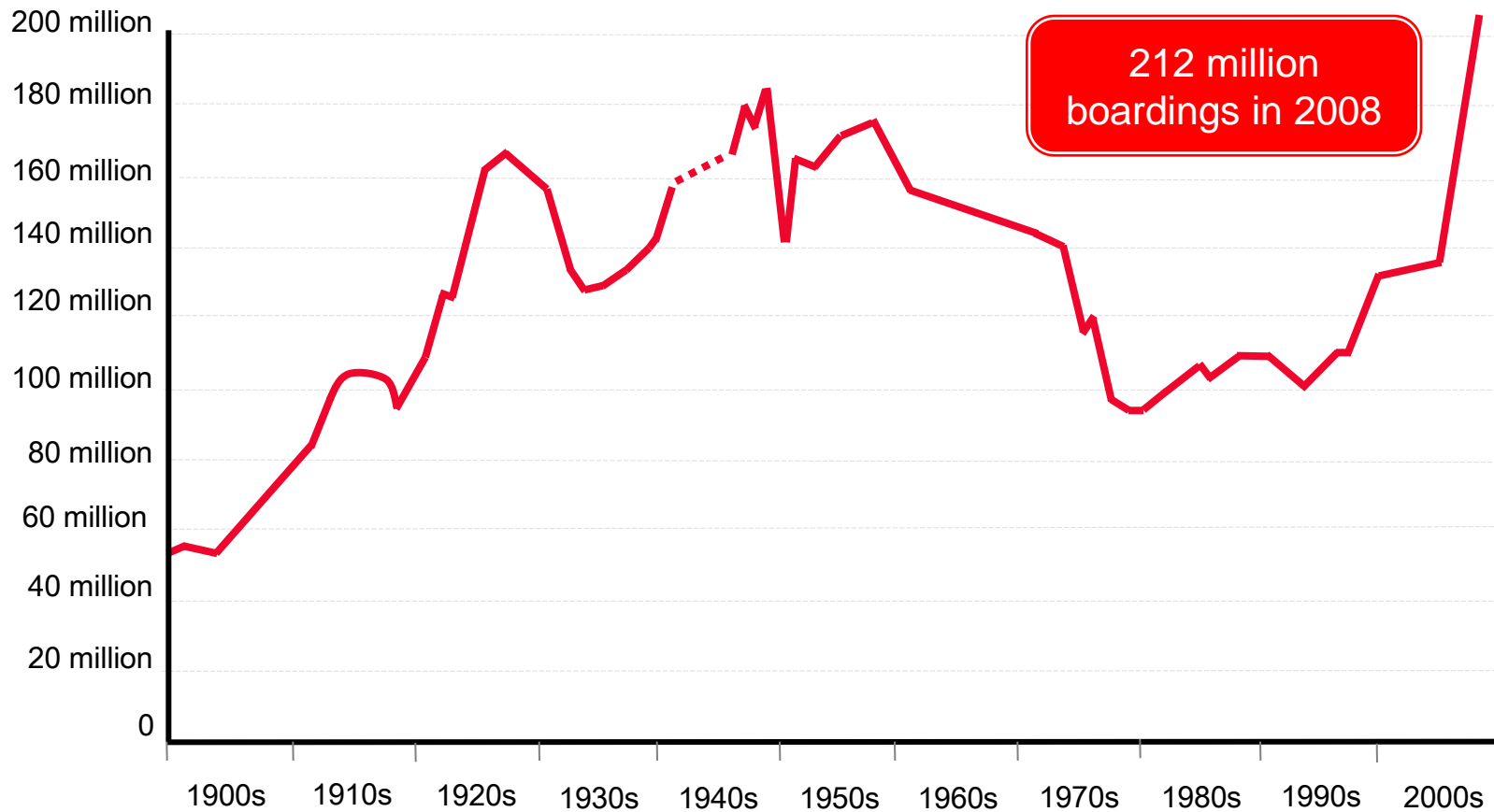
..so land use needs to be part of the response.

- Need to accommodate an additional 600,000 residences
- Roughly half of the urban fringe, half within the existing urban envelope
- Additional development around 6 major “Central Activity Districts”
- Additional development along Melbourne’s linear tram corridors
- Shifting the geographic centre of Melbourne (both residential and economic) towards the west
- Recognising the role of Victoria’s major regional centres

Mode choice matters



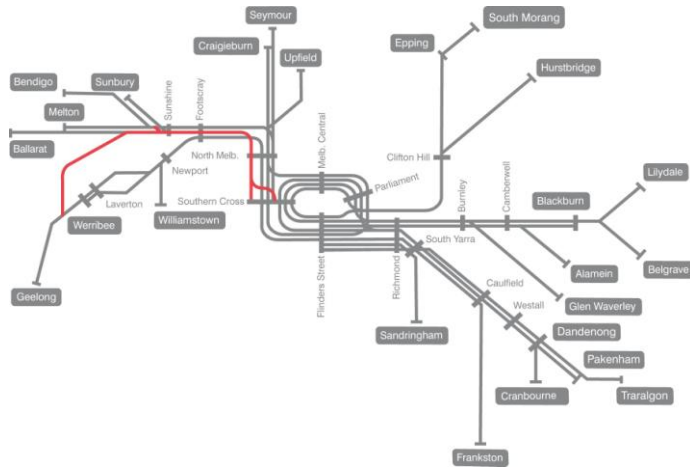
...and demand for public transport is growing



...so mode shift has to be part of the solution.

- A focus on public transport
- A focus on cycling infrastructure
- Highlights to encourage mode shift:
 - Regional Rail Link
 - Melbourne Metro 1
 - Cycling Strategy

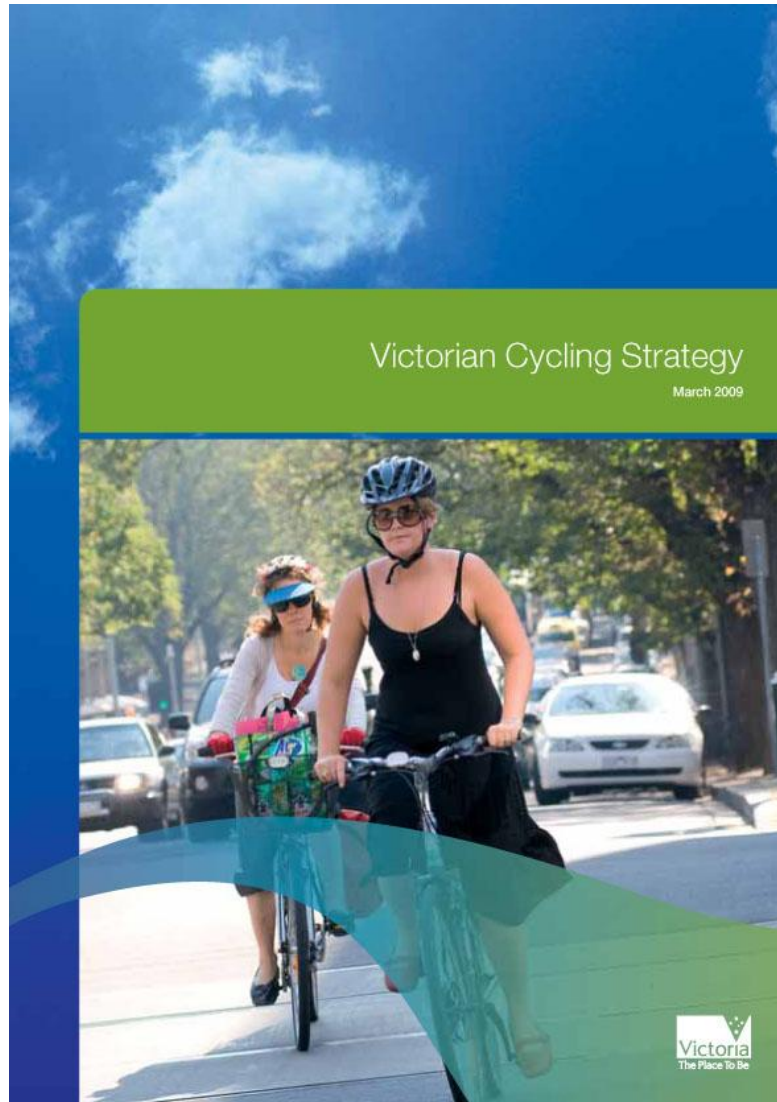
Including public transport...



...and cycling

The Victorian Cycling Strategy

- A transport strategy, not a health strategy
- Not for the lycra warriors, but the rest of us
- Building for 10% annual growth in commuter numbers



The efficiency of each mode matters...

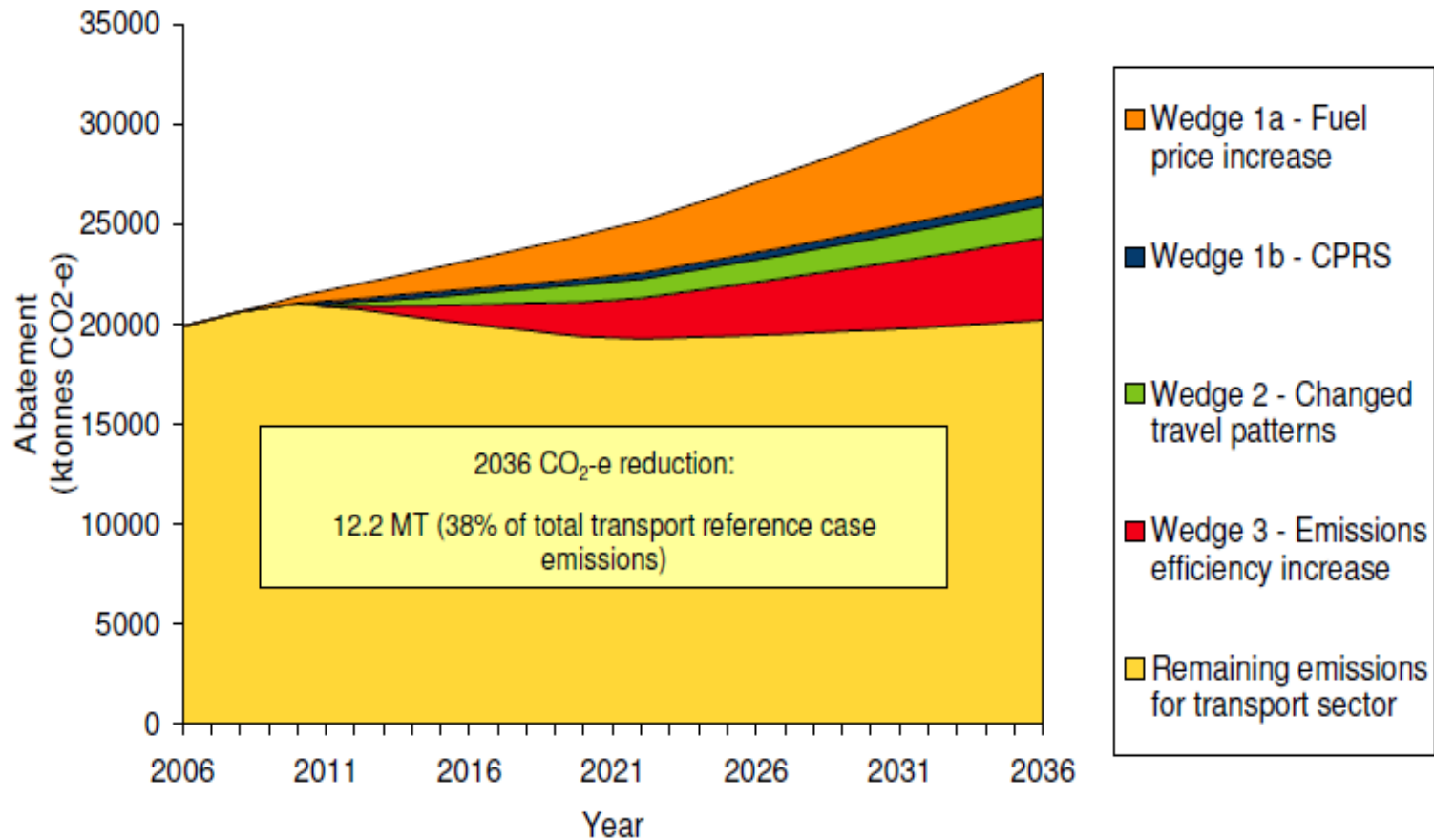


Figure 1 – Victoria's transport sector emissions (showing summary of transport initiatives)

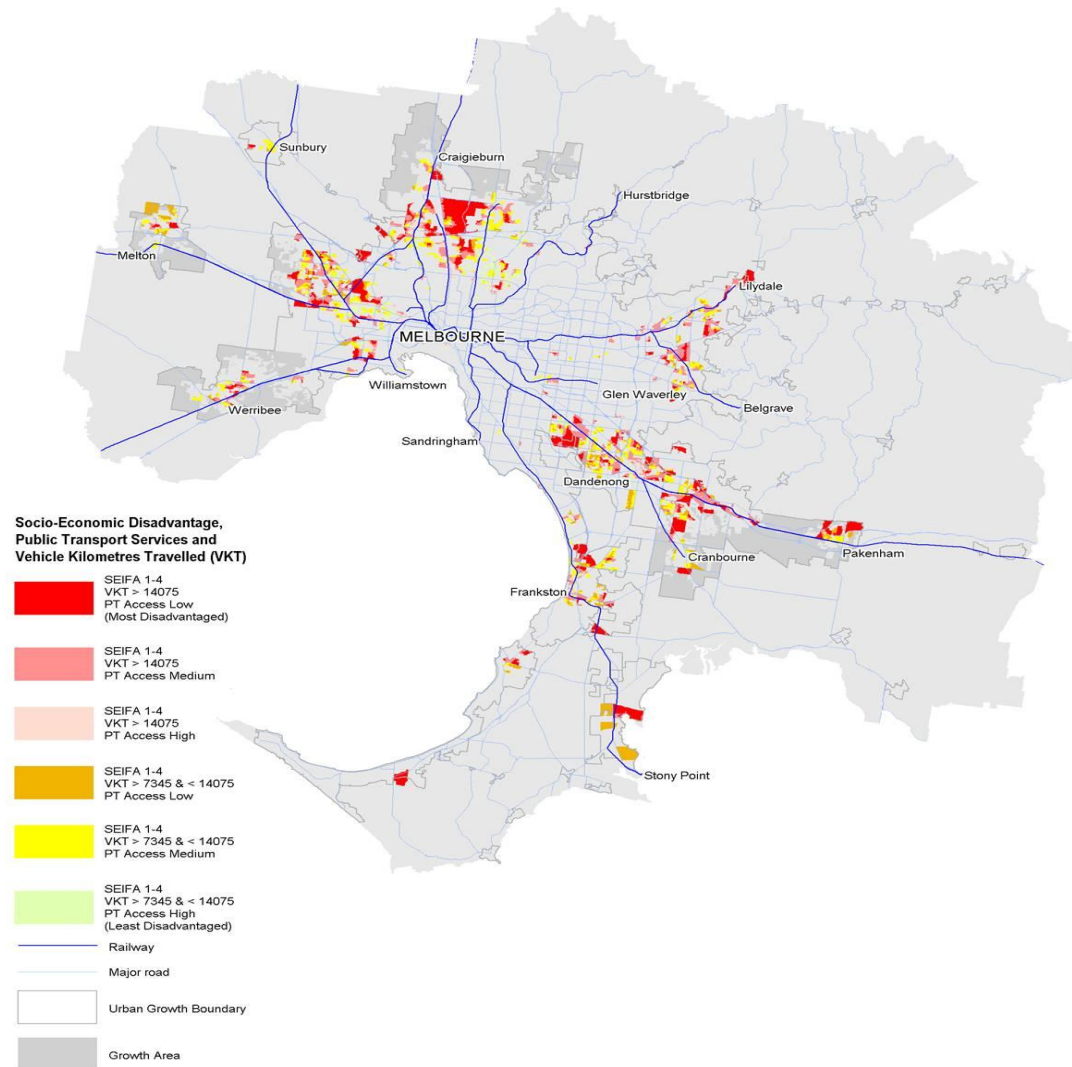
...so efficiency is also part of the solution.

- Particularly to reduce emissions from the motor vehicle fleet
 - Emissions targets for the Government fleet
 - Voluntary targets for private fleets
 - Five year electric vehicle trial

Adaptation matters

- For the transport sector, adaptation to climate change has to focus on
 - The resilience of infrastructure and services
 - Changes in demand for transport
 - People
 - Freight
 - The resilience of individuals and equity

Adaptation matters



Note: Public Transport (PT) access data in development and may be subject to change.

Thank you